



PARTS PRICING

Effective November 1, 2018

DR2100 Indicator

Home Run Cables

Scanners

Class II Scale Base (LTEF16)

Class III Scale Base (LTEF20)

DR2100 INDICATOR PARTS LIST

(Note DR2100A is non-NTEP; DR2100AN is NTEP)

COMPLETE INDICATORS

<u>Part Number</u>	<u>Description</u>	<u>Notes</u>	<u>List Price</u>
DR2100A	Digital Indicator, LCD, Std.	Non-NTEP	1,895.00
DR2100AN	Digital Indicator, LCD, NTEP	NTEP	1,895.00
DR RADIO	DR2100 Radio Add-On		715.00

APPLIES TO ALL DR2100's

<u>Part Number</u>	<u>Description</u>	<u>Notes</u>	<u>List Price</u>
3534LT-K	KIT, BOLT, STEEL SQ U	Indicator Mounting Hardware (U-Bolts/Nuts/Washers)	25.45
P10006-K	DC-DC Power Converter Kit	Req. for electric lift trucks only	107.00
PC-CABL	CABLE, POWER, TRUCK TO IND.	Power cable, 15 ft. cord w 3 pin connector	102.30
7021LTS	Harness, Power Assembly-ON/OFF	On/Off Switch, for Parts orders	52.67
DR2100AFB	PCB, Filter	Filter Board	233.32
CF-21-F-S-BC	BACK COVER SMALL (DR2100-BC)		34.65
21BGASK	Gasket, DR2100, Back		7.39
CP-RS232	Plate, Cover, RS232	Metal blanks to cover holes	9.23
7028LTS	Harness, Power Connector Assy		38.12
A14948	Harness, DR Filter to Main 1	Filter Board to Main Board - Load Cell	30.90
A14949	Harness, DR Filter to Main 2	Filter Board to Main Board - Clino	4.44
7027LT	Harness, Barcode	for Barcode Scanner, 2012 and older	48.28
A14952	Harness, Scanner Input Assy	for Barcode Scanner, 2012 and newer	78.75
CF-21-F-S-E	Enclosure, Small (DR2100-E)		96.50
CF-21-F-S-W	Window, Small (DR2100-W)		23.50
CF-02-F-S	MOUNTING BRACKET SML DR2100B3		38.59
21FGASK	GASKET, DR2100, FRONT		3.93
P10014	LTS Board Sets	Includes DR2100M-A, DR2100AKB-A, DR2100AD	1,295.70
DR2100M-A	NEW BD SET-MAIN ONLY	part of P10014	851.50
DR2100AKB	KEYPAD, DR2100	part of P10014, 2012 and older	262.50
DR2100AKB-A	KEYPAD-NEW REV BOARDS	part of P10014, 2012 and newer	262.50
DR2100AD	PCB, DISPLAY, LCD	part of P10014	181.70

UNIQUE TO DR2100A (NON-NTEP)

7023LT	Harness, Load Cell, Std.	NON-NTEP, 2012 and older	43.51
A14964	Harness, Load Cell, Indicator	NON-NTEP, 2012 and newer	43.51

UNIQUE TO DR2100AN (NTEP)

7023LT-N	Harness, Load Cell, NTEP	NTEP, 2012 and older	50.47
A14951	Harness, Load Cell, IND., NTEP	NTEP, 2012 and newer	42.00

CONNECTORS THAT ARE PART OF HARNESS or CABLE PART NUMBERS

3102A-10SL-3P	CONNECTOR, 3-PIN MALE, PNL	for Part 7021LTS	38.12
3106A-10SL-3S	CONNECTOR, 3-PIN FEMALE	for Part PC-CABL	38.12
3106A-10SL-3S*	Kit, Conn/Clamp/Boot	for Part PC-CABL	38.12
3102A-14S-5S	CONNECTOR, 5-PIN FEMALE, PNL	for Part 7023LT	38.12
3102A-14S-6S	CONNECTOR, 6-PIN FEMALE, PNL	for Part 7027LT	32.34
JMR1607F	Connector, 7-pin, Female, Pnl	for Part A14951	38.64

RADIO COMPONENTS (Item: DR RADIO)

ABDB-SE-IN5410	Quatech WiFi/802.11 Module		615.00
CF-21-F-S-U	Back Plate UPS Hwd DR2100A		49.25
11-620	Bracket, Radio, Silex		31.95
QUATECHEXT-CABL	Cable, Quatech Ext. Radio Assy		34.95
A14941	Harness, RS232		21.95
0600-00010	Antenna, Dipole, SMA RP		34.95
0600-00031	Antenna, Dipole, Swivel		38.95

HOME RUN CABLE PARTS LIST (aka LOAD CELL CABLE)

<u>Part Number</u>	<u>Description</u>	<u>Notes</u>	<u>List Price</u>
<u>COMPLETE HOME RUN CABLE ASSEMBLIES</u>			
LC-CABL	HR Cable, Standard	For DR and X-1 Indicator, standard length	233.00
LC-CABL-ER	HR Cable, Std, Ext Reach	For DR and X-1 Indicator, extended reach	297.00
LC-CABL-CN	HR Cable, NTEP	For DR and X-1 Indicator, standard length	233.00
LC-CABL-N-ER	HR Cable, NTEP Ext Reach	For DR and X-1 Indicator, extended reach	297.00
LC-CABL-N-D	HR Cable, for Digital ind.	For PC-based indicators, standard length	233.00
LC-CABL-N-D-ER	Home Run Cable, Digital Ext Reach	For PC-based indicators, extended reach	297.00
LC-CABL-N-CM	HR Cable, NTEP, CM	For DR and X-1 Indicator, standard length, CM	233.00
LC-CABL-N-CMD	HR Cable, for Digital ind,CM	For PC-based indicators, standard length, CM	233.00

Non-NTEP Connectors (for DR2100A and R320 Indicators)

3106A-14S-5P*	KIT, CONN/CLAMP/BOOT	Connects to Indicator, Kit	49.33
3106A-14S-5P	Connector, 5-Pin Male	Connects to Indicator, Connector only	35.60
3106A-14S-5S*	KIT, CONN/CLAMP/BOOT	Connects to Load Cell, Kit	49.33
3106A-14S-5S	Connector, 5-Pin, Female	Connects to Load Cell, Connector only	38.12

NTEP Connectors (for DR2100AN and X-1 Indicators)

JMSP1607M	Connector, 7pin, St Plug, Male	Connects to Indicator	38.12
JMSP1607F	Connector, 7pin St Plug Female	Connects to Load Cell	38.12
9779-513-6	Boot, Rubber, Black #6	Need 1 for each Connector ordered	1.91

NTEP Connectors (for PC-based Indicators)

156-1309-E	Connector, 9-Pin, DB9, Female	Connects to Indicator	2.60
JMSP1607F	Connector, 7pin St Plug Female	Connects to Load Cell	38.12
9779-513-6	Boot, Rubber, Black #6	Need 1 for each Connector ordered	1.91
152-9009-E	HOOD, DB-9	Need 1 for each Connector ordered	7.04

For all Load Cell Cables

3100LT-K	Kit, Side Shift Bracket	Recommended if lift truck has a side shifter	93.00
----------	-------------------------	--	-------

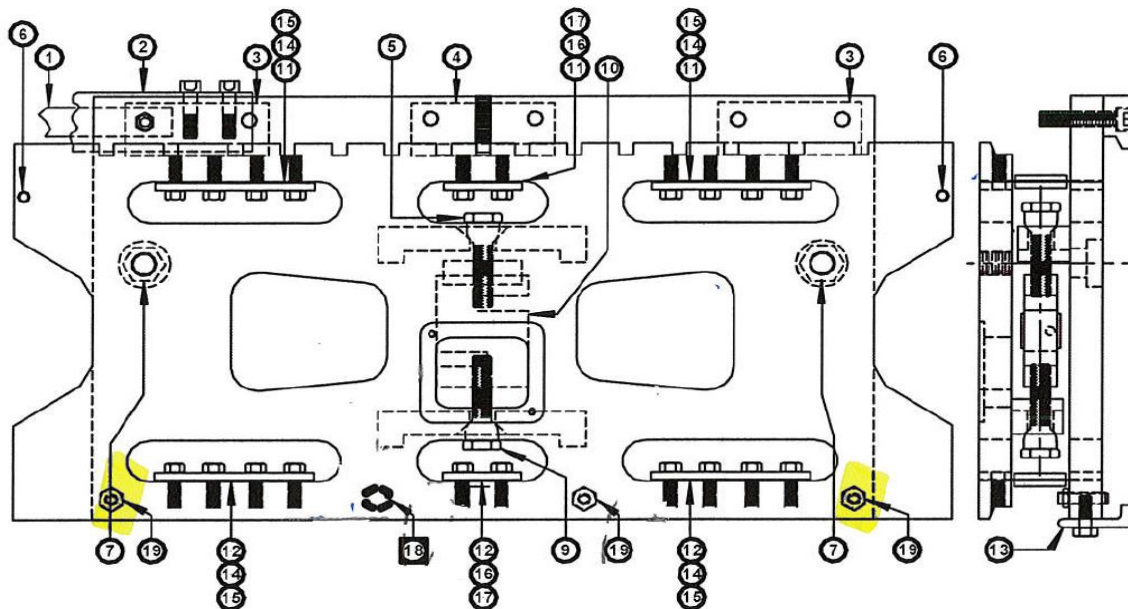
Wireless, Base to DR2100A only (Item LC-CABL-RF)

BC-003	Charger, 3-Pin		145.00
RF-BAT-PACK	RF BATTERY PACK		318.00
RF-SPC	RF POWER CORD	from battery to RF unit - 3 pin to 6 pin	66.41
P10089	RS232-BT Adapter-Female DCE	For Bluetooth communication devices	237.00
0600-00010	Antenna, Dipole, SMA RP		34.95
0600-00031	Antenna, Dipole, Swivel		38.95
P10056	QUATECH Radio Repl Antenna	For Radio communication devices	20.95
PS-1229	BATTERY, 12V 2.3AH AGM		101.18

BARCODE SCANNER PARTS LIST

<u>Part Number</u>	<u>Description</u>	<u>Notes</u>	<u>List Price</u>
<u>COMPLETE SCANNER ASSEMBLIES</u>			
3800LR-K	DR2100 Scanner Option-Handheld	Handheld scanner for DR2100	460.00
SCAN-HS-1	X-1 Scanner Option-Handheld	Handheld scanner for X-1	460.00
SCAN-HS-A	Digital Indicators-Handheld	Handheld scanner for PC-based	460.00
3900LR-K	DR2100 Scanner Option-Mounted	Fixed Mount Scanner for DR2100	760.00
SCAN-FS-1	X-1 Scanner Option-Mounted	Fixed Mount Scanner for X-1	760.00
SCAN-FS-A	Digital Indicators-Mounted	Fixed Mount Scanner for PC-based	760.00
<hr/>			
<u>Handheld Scanner (3800LR-K for DR2100; SCAN-HS-1 for X-1; SCAN-HS-A for other PC)</u>			
P10022	Scanner, Barcode, Gun Type	Scanner only, without cable	290.00
P10023	Cable, Honeywell RS232 DB9	For DR2100 only (sell with BC-CABL)	47.50
BC-CABL	CABLE, BARCODE SCANNER	For DR2100, Adapter cable-DB9 male to 6 pin AMP	92.40
LT-SCMT	Holder, Scanner for 3800LR		63.53
LT-BCS	PAD, BARCODE SCANNER		9.24
A14952	Harness, Scanner Input Assy		78.75
P10023USB	USB Cable for P10022 Scanner	For X-1 and other PC-based indicators	35.40
<u>Fixed Mount Scanner (3900LR-K for DR2100; SCAN-FS-1 for X-1; SCAN-FS-A for other PC)</u>			
P10024	Scanner, Vuquest	Scanner only, without cable (2012 and newer DR's)	640.00
P10025	Cable, Vuquest Scanner Assy	For DR2100 only	44.57
LT-SCNBR	Bracket, Scanner for 3900LR		33.50
P10025USB	USB Cable for P10024 Scanner	For X-1 and other PC-based indicators	23.40

CLASS II: LTEF16 and LTEF16N Parts List



Ref. #	Part Number	Description	Quantity	List Price
1	3099LT-K	KIT, BRACKET, L/C CABLE MTG	1	25.41
<i>See</i>	3099LT	Bracket, Mounting, LC Cable	1	24.14
<i>NTEP</i>	3056LT	NUT, JAM, 5/8-11, GR2	1	0.69
<i>Below</i>	3048LT	WASHER, FLAT, GR8, 5/8	1	0.58
2	3097LT-K	KIT, GUARD, CABLE, CL II	1	28.00
	3097LT	Guard, Cable, CL II	1	25.92
	3059LT	SCREW, S.H.C., 1/2-13x2-3/4	2	1.04
3	3096LT-K	KIT, CLEAT, MOUNTING, END	1	102.02
	3096LT	CLEAT, END, CL II	2	46.32
<i>A</i>	3085LT	SCREW, S.H.C., 5/8-11x2-3/4	1	2.60
	3072LT	SCREW, S.H.C., 5/8-11x1-3/4	3	2.26
4	3095LT-K	KIT, CLEAT, MOUNTING, CENTER	1	79.94
	3095LT	CLEAT, CENTER, CL II	1	62.37
	3076LT-BLT	Bolt, 3/4-10x2-1/4 S.S.S.	1	13.05
	3072LT	SCREW, S.H.C., 5/8-11x1-3/4	2	2.26
5	3067LT-K-T	KIT, BOLT SUSP, LD CELL TOP	1	48.61
	3067LT-NEW	BOLT, L/C SUSP, 3/4-16 X 4.0	1	38.10
	3129LT	GASKET, NEOPRENE, 410433	1	4.16
	3125LT	Shock Absorber	1	2.89
	3049LT	WASHER, FLAT, 3/4,1.5od, GR8	1	1.27
	3055LT	NUT, JAM, 3/4-16 GR8	1	2.19
6	3060LT-1.75	Screw, HHCS, 1/2-13x1.75 Gr 8	2	2.83
7	3079LT-K	KIT, BOLT, SAFETY	2	11.27
	3079LT	BOLT, HEX HD. CAP, 1-8x 4	1	9.25
	3062LT	LOCKWASHER, MED. SPLIT, 1in	1	0.92
	3064LT	NUT, JAM, 1-8 GR2	1	1.10
8	N/A	PLACEHOLDER		

CLASS II: LTEF16 and LTEF16N Parts List

9	3067LT-K-B	KIT, BOLT SUSP, LD CELL,BOTTOM	1	43.75
	3067LT-NEW	BOLT, L/C SUSP, 3/4-16 X 4.0	1	38.10
	3049LT	WASHER, FLAT, 3/4,1.5od, GR8	1	1.27
	3055LT	NUT, JAM, 3/4-16 GR8	2	2.19
10	3118-10K-LT	KIT, LOAD CELL, 10K, W/CONN	1	870.29
<i>See</i>	3101A-14S-5P	Connector, 5-pin, Male	1	38.12
<i>NTEP</i>	97-3057-6	Clamp, 14 Shell, w/o Boot	1	12.97
<i>Below</i>	9779-513-6	Boot, Rubber, Black #6	1	1.91
11	3144LT-050-K	Kit, Flexure, CL II; incl - includes (4) 3051LT bolts and (4) 3058LT washers	5	28.88
12	3144LT-050-K	Kit, Flexure, CL II; incl - includes (4) 3051LT bolts and (4) 3058LT washers	5	28.88
13	3101LT-D-K	KIT, SAFETY PLATE, DBL WDECLII	2	71.54
	3101LT-D	Plate, Safety, Dbl Wide, CLII	1	62.50
	3051LT	BOLT, HEX.HD.1/2-13x1-1/4 GR 8	4	1.05
	3058LT	WASHER, FLAT, GR8, 1/2	4	1.21
14	3110LT-K	KIT, BRACKET,FLEXURE,MOUNTING	8	32.60
	3110LT	BRACKET, MOUNTING, DBL. FLEX.	1	23.56
	3051LT	BOLT, HEX.HD.1/2-13x1-1/4 GR 8	4	1.05
	3058LT	WASHER, FLAT, GR8, 1/2	4	1.21
15	3109LT-K	KIT, CLAMP, SANDWICH, FLEX 6"	4	36.27
	3109LT-H	CLAMP, SANDWICH 6" FLEX HOLE	1	17.32
	3109LT-T	CLAMP, SANDWICH 6" THREADED	1	17.31
	3050LT	Screw, SHCS, 3/8-16 x3/4	4	0.41
16	3108LT-K	KIT, CLAMP, SANDWICH, FLEX 3"	2	26.23
	3108LT-H	CLAMP, SANDWICH, 3" FLEX HOLE	1	12.13
	3108LT-T	CLAMP, SANDWICH, 3" THREADED	1	13.28
	3050LT	Screw, SHCS, 3/8-16 x3/4	2	0.41
17	3111LT-K	KIT, BRACKET,FLEXURE,MOUNTING	4	22.31
	3111LT	BRACKET, MOUNTING, SING. FLEX	1	17.79
	3051LT	BOLT, HEX.HD.1/2-13x1-1/4 GR 8	2	1.05
	3058LT	WASHER, FLAT, GR8, 1/2	2	1.21
18	3053LT	SCREW, HEX HD.GR8,1/2-13 x 1	1	0.87
19	3060LT-K	KIT, BOLT, CARRIAGE ALIGNMENT	1	7.47
	3060LT	SCREW, FLAT PT. SOC.,1/2-13x2	3	1.91
	3065LT	NUT, JAM, PLTD., 1/2-13	3	0.58
	SHIM KIT			
	SHIM KIT	FOR LT SCALE	1	44.47
	3494LT	SHIM, .010, 1/2"	5	
	3496LT	SHIM, .001, 1/2"	5	
	3499LT	SHIM, .020, 1/2"	5	
	3498LT	SHIM, .015, 1/2"	5	

NOTE A: For NTEP scales going to LTL carriers, Item 3072LT is used in place of Item 3085LT.

CLASS II: LTEF16 and LTEF16N Parts List

CABLE MOUNTING BRACKET - NTEP FOR LTL CARRIERS

1	3099LT-K-N	KIT, BRACKET, L/C CABLE MTG	1	25.41
	3099LT	Bracket, Mounting, LC Cable	1	24.14
	3054LT	Bolt, Hex HD.,5/8-11 x 1-1/4	1	0.69
	3048LT	WASHER, FLAT, GR8, 5/8	1	0.58

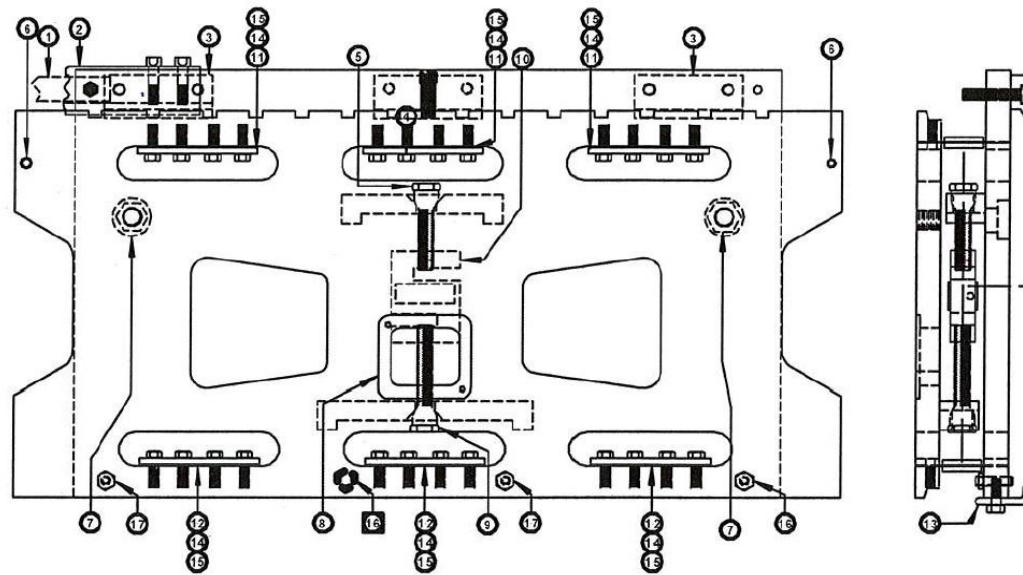
LOAD CELL KIT FOR NTEP APPLICATIONS (LTEF16N)

10	3118-10K-LT-N	KIT, LOAD CELL, 10K W/CON NTEP	1	867.77
	3106A-14S-5P	Connector, 5-Pin Male	1	35.60
	97-3057-6	Clamp, 14 Shell, w/o Boot	1	12.97
	9779-513-6	Boot, Rubber, Black #6	1	1.91

CLINO BOX ASSEMBLIES FOR NTEP APPLICATIONS

	8099-KSM	Clino, Legacy, DR, Side M		640.00
	8100-KSM	Clino, Legacy, PC, Side M		590.00

CLASS III: LTEF20 and LTEF20N Parts List



Ref. #	Part Number	Description	Quantity	List Price
1	3099LT-K	KIT, BRACKET, L/C CABLE MTG	1	25.41
	3099LT	Bracket, Mounting, LC Cable	1	24.14
	3056LT	NUT, JAM, 5/8-11, GR2	1	0.69
	3048LT	WASHER, FLAT, GR8, 5/8	1	0.58
2	3098LT-K	KIT, GUARD, CABLE, CL III	1	32.34
	3098LT	Guard, Cable, CL III	1	30.26
	3059LT	SCREW, S.H.C., 1/2-13x2-3/4	2	1.04
3	3093LT-K	KIT, CLEAT, MOUNTING, END	2	83.20
	3093LT-15K	Cleat, End, 1.5x2.5x10.5 CLIII	1	76.78
	3022LT	SCREW, S.H.C., 5/8-11x2.25	3	2.14
4	3094LT-K	KIT, CLEAT, MOUNTING, CENTER	1	53.99
	3094LT	Cleat, Center, CL III, 5.5	1	47.45
	3072LT	SCREW, S.H.C., 5/8-11x1-3/4	1	2.26
	3022LT	SCREW, S.H.C., 5/8-11x2.25	2	2.14
5	3067LT-15K-K-T	Kit, Bolt, Susp, Top, CLIII	1	62.04
	3067LT-15K-4.5	BOLT, L/C SUSP, 1-14 X 4.5	1	44.24
	3130LT	Shock Absorber	1	6.76
	3129LT	GASKET, NEOPRENE, 410433	1	4.16
	3546LT	WASHER, FLAT, 1 X 1 3/4 OD	2	2.31
	3032LT	NUT, JAM, 1-14	1	2.26
6	3054LT-2.5	Screw, Hex Head, 5/8-11x2.5	2	5.54
	3078LT-K	Kit, Bolt, HEX HD, SAFETY	2	7.22
	3078LT	BOLT, HEX HD. CAP, 1-8 x 4-1/2	1	5.20
	3062LT	LOCKWASHER, MED. SPLIT, 1in	1	0.92
7	3064LT	NUT, JAM, 1-8 GR2	1	1.10
	3107LT-K	KIT, PLATE, COVER, LOAD CELL	1	31.45
	3107LT-15K-R	Plate, Cover, Class III	1	30.07
8	3042LT	SCREW, FH S.H.C., 5/16-18 x 1/2	2	0.69
	3068LT-15K-K-B	Kit, Bolt, Susp, Bot, CLIII	1	54.89
	3068LT-15K-5.5	BOLT, L/C SUSP, 1-14 X 5.5	1	43.49
	3546LT	WASHER, FLAT, 1 X 1 3/4 OD	2	2.31
9	3032LT	NUT, JAM, 1-14	3	2.26

CLASS III: LTEF20 and LTEF20N Parts List

10	3118-15K-LT	KIT, LOAD CELL, 15K, W/CONN	1	1,051.01
<i>See</i>	3101A-14S-5P	Connector, 5-pin, Male	1	38.12
<i>NTEP</i>	97-3057-6	Clamp, 14 Shell, w/o Boot	1	12.97
<i>Below</i>	9779-513-6	Boot, Rubber, Black #6	1	1.91
11	3144LT-K	Kit, Flexure TOP CL III .060 - includes (4) 3051LT bolts and (4) 3058LT washers	6	28.88
12	3145LT-K	Kit, Flexure BOT CL III .060 - includes (4) 3051LT bolts and (4) 3058LT washers	6	28.88
13	3102LT-K	KIT, SAFETY PLATE, CLS III	1	71.60
	3102LT	PLATE, SAFETY, CLIII	1	64.54
	3051LT	BOLT, HEX.HD.1/2-13x1-1/4 GR 8	2	1.05
	3058LT	WASHER, FLAT, GR8, 1/2	2	1.21
	3054LT	Bolt, Hex HD.,5/8-11 x 1-1/4	2	0.69
	3048LT	WASHER, FLAT, GR8, 5/8	2	0.58
14	3110LT-K	KIT, BRACKET,FLEXURE,MOUNTING	12	32.60
	3110LT	BRACKET, MOUNTING, DBL. FLEX.	1	23.56
	3051LT	BOLT, HEX.HD.1/2-13x1-1/4 GR 8	4	1.05
	3058LT	WASHER, FLAT, GR8, 1/2	4	1.21
15	3109LT-K	KIT, CLAMP, SANDWICH, FLEX 6"	6	36.27
	3109LT-H	CLAMP, SANDWICH 6" FLEX HOLE	1	17.32
	3109LT-T	CLAMP, SANDWICH 6" THREADED	1	17.31
	3050LT	Screw, SHCS, 3/8-16 x3/4	4	0.41
16	3054LT	Bolt, Hex HD.,5/8-11 x 1-1/4	1	0.69
17	3061LT-K	KIT, BOLT, CARRIAGE ALIGNMENT	1	24.60
	3061LT	SCREW, FLAT PT. SOC.,5/8-11	3	7.51
	3056LT	NUT, JAM, 5/8-11, GR2	3	0.69
<u>SHIM KIT</u>				
	SHIM KIT	FOR LT SCALE	1	44.47
	3494LT	SHIM, .010, 1/2"	5	
	3496LT	SHIM, .001, 1/2"	5	
	3499LT	SHIM, .020, 1/2"	5	
	3498LT	SHIM, .015, 1/2"	5	

Note that in some cases, Class III scales may have been made with 10K load cells. In those situations, the correct L/C kit would be 3118-10K-LT or 3118-10K-LT-N.

LOAD CELL KIT FOR NTEP APPLICATIONS (LTEF20N)

10	3118-15K-LT-N	KIT, LOAD CELL, 15K W/CON NTEP	1	1,048.49
	3106A-14S-5P	Connector, 5-Pin Male	1	35.60
	97-3057-6	Clamp, 14 Shell, w/o Boot	1	12.97
	9779-513-6	Boot, Rubber, Black #6	1	1.91

CLINO BOX ASSEMBLIES FOR NTEP APPLICATIONS

	8099-KSM	Clino, Legacy, DR, Side M		640.00
	8100-KSM	Clino, Legacy, PC, Side M		590.00